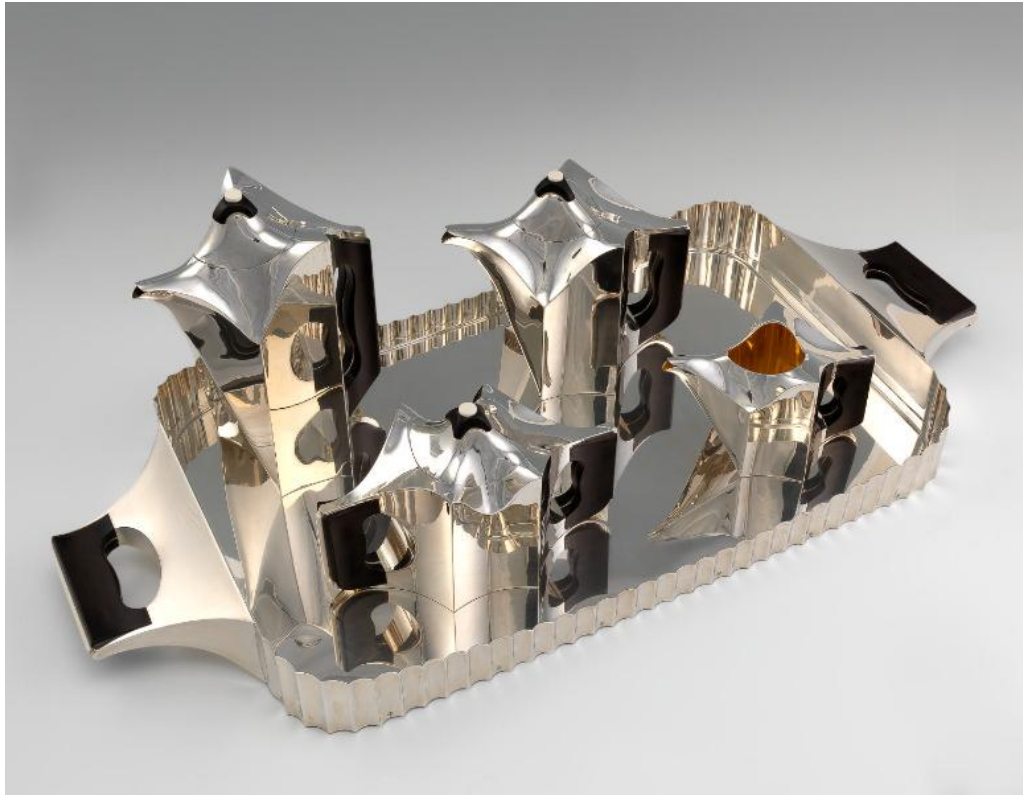


Basic Detail Report



Title Tea and coffee service commissioned for The Newark Museum's 75th Anniversary

Date 1983 and 1984

Primary Maker Ubaldo Vitali

Medium Silver, ebony, ivory, plexiglas

Dimensions Length (Tray): 33 1/2 in. (85.1 cm) Overall (Coffee pot): H 11 x W 3 1/2 in. (H 27.9 x W 8.9 cm) Overall (Teapot): H 8 1/8 x W 9 1/4 in. (H 20.7 x W 23.5 cm) Overall (Creamer): H 4 1/2 x W 7 1/2 in. (H 11.4 x W 19.1 cm) Overall (Sugar bowl): H 6 5/8 x W 10 in. (H 16.8 x W 25.4 cm)